



Voerynth OS

5.0.1 — Neural Interface



LOCAL-FIRST COMMAND DECK • REAL-TIME • ZERO-CLOUD BY DEFAULT

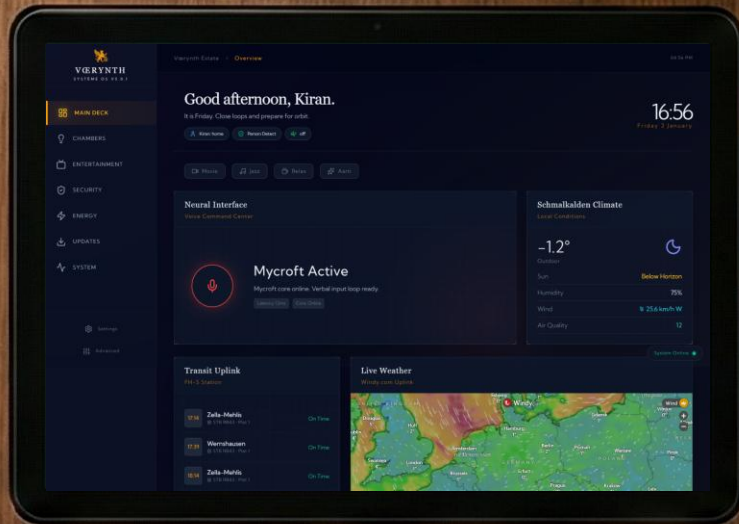
Designed for estates. Engineered for reliability.

WALL PANELS • MOBILE • VOICE (OPTIONAL) • OFFLINE CONTROL



Voerynth OS

5.0.1 — Neural Interface



Not another dashboard —
a command deck.

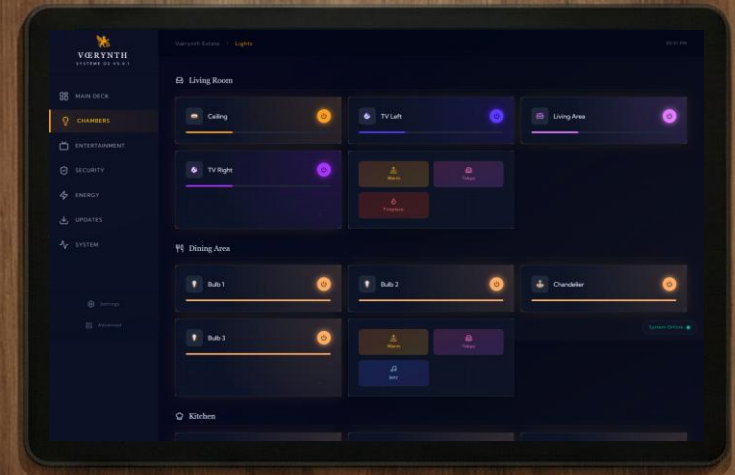
Voerynth OS 5.0.1 is a local-first Neural Interface built for estates and superyachts — where reliability matters more than “smart gadgets.” It’s designed for owners and staff: clear status, fast control, and calm operations, even when the internet is irrelevant.

- **Local-first, always** — core control works on the LAN, not on hope
- **Real-time response** — instant feedback, no cloud round-trips
- **Role-ready UI** — owner view, staff view, engineering view (without chaos)
- **Modes over micromanagement** — “Night”, “Guests”, “Away”, “At Sea” in one tap
- **Clarity over clutter** — the right signals, not a wall of toggles

Real-time control, without the cloud.

Voerynth OS runs on your local network for instant response and predictable behaviour—built for estates and yachts where uptime matters.

- **LAN-first control** — core actions keep working offline
- **Instant feedback** — state changes update in real time
- **Clear status** — energy, climate, security, presence in one view
- **Modes over micromanagement** — Night / Guests / Away / At Sea
- **Role-ready screens** — owner view, staff view, engineering view
- **Audit-friendly** — clean logs, structured states (optional)





Voerynth OS

5.0.1 — Neural Interface



Luxury is silence that obeys.

Voerynth OS is built for spaces where design matters. It doesn't fight the interiors — it supports them. The technology stays behind the curtain, and what you feel is calm: stable routines, clean scenes, and control that never interrupts the room.

- **Ambience-first** — lighting and climate tuned like a hotel suite
- **Scenes, not switches** — “Evening”, “Hosting”, “Night”, “Away” in one tap
- **Invisible infrastructure** — local-first backbone, no cloud dependency
- **Staff-ready** — simple, safe controls without exposing complexity
- **Always composed** — the system feels quiet even when it's doing a lot

Command at sea — no internet required.

Voerynth OS is designed for marine reality: changing networks, limited connectivity, and systems that must keep working when the shoreline disappears.

Owners get clarity. Crew gets simplicity. Engineers get structure. Everyone gets uptime.

- **Offline-first operations** — control remains local even when connectivity drops
- **Crew-ready roles** — owner / crew / engineering views with safe boundaries
- **Real-time status** — lighting, climate, energy, security, tanks in one view
- **Modes for life onboard** — “Docked”, “Underway”, “Night”, “Guest”, “Away”
- **Quiet reliability** — predictable behaviour, no cloud latency, no surprises





Vøerynth OS

5.0.1 — Neural Interface

Built for motion. Trusted at sea.

On a yacht, the cloud is a luxury you don't always have—reliability is the real premium feature.

Vøerynth doesn't just control comfort systems; it can read vessel signals through NMEA 2000 and Signal K, turning raw telemetry into safety-aware context. Offline behaviour is first-class: if connectivity drops, operators still see the last stable system snapshot. The same discipline extends to RVs—battery, tanks, climate, and occupancy—so the system behaves like a dependable co-pilot, not a fragile smart-home demo.





Voerynth OS

5.0.1 — Neural Interface



A workplace that anticipates.

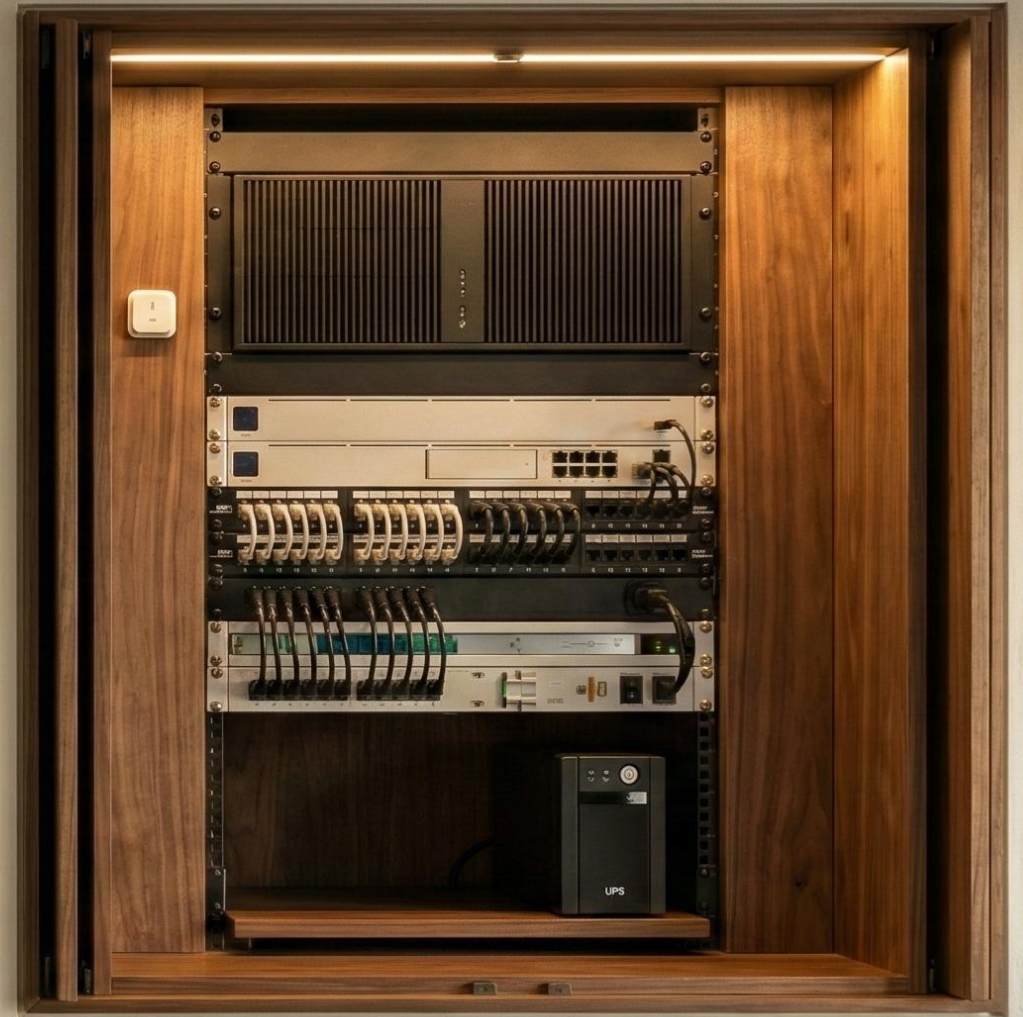
Voerynth OS brings estate-grade reliability to premium workplaces — where meetings can't be interrupted by “apps,” and facilities can't depend on the internet. Real-time control, clear status, and role-safe access for reception, IT, and facility teams.

- **Meeting modes** — “Boardroom”, “Presentation”, “After Hours” in one tap
- **Role-safe access** — reception / facilities / IT views, no chaos
- **Local-first uptime** — core control stays on LAN even during outages
- **Comfort as a system** — lighting, HVAC, blinds tuned like a hotel
- **Security-ready** — zones, access events, alerts (optional)
- **Audit-friendly** — structured logs and predictable automation

Built like infrastructure.

Used like luxury.

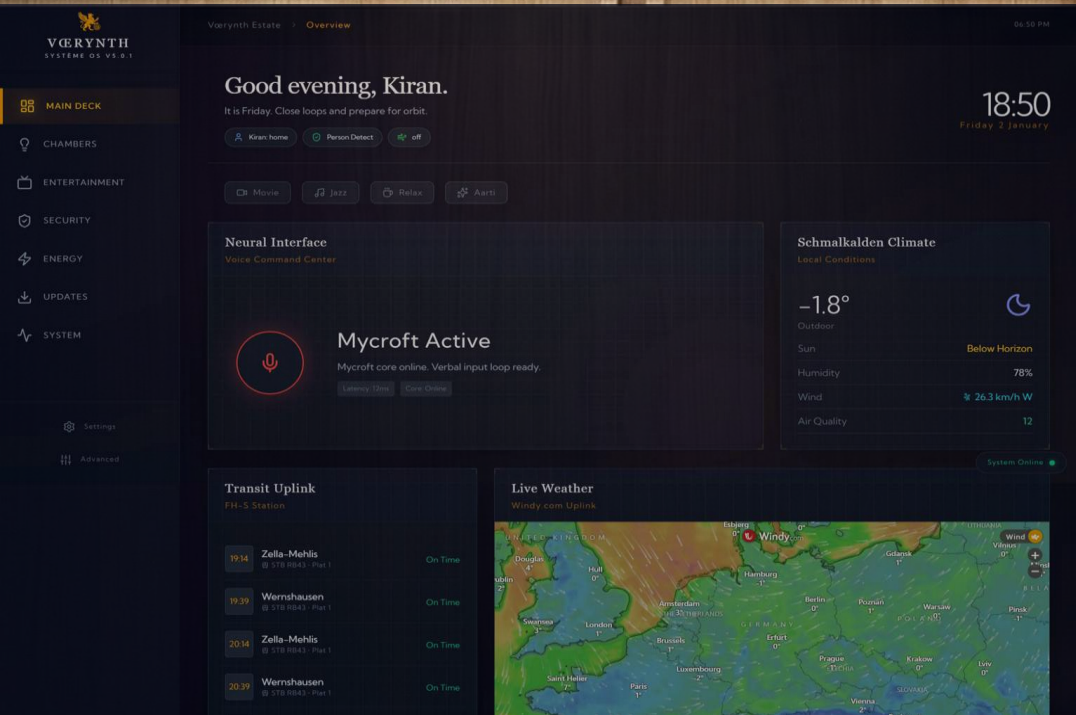
- 1) **Local-first core** — everything runs on the property LAN
- 2) **Real-time signal layer** — devices → states → scenes
- 3) **Role-safe control** — owner / staff / engineering views
- 4) **Automation + modes** — routines that don't need micromanagement
- 5) **Observability** — logs, health, alerts (optional)
- 6) **Offline resilience** — keeps working when internet is irrelevant





Voerynth OS

5.0.1 — Neural Interface



Your estate, at a glance.

Voerynth OS is built to reduce decision-fatigue. It surfaces only what matters—presence, climate, security, energy, and modes—so owners and staff act fast without hunting through apps.

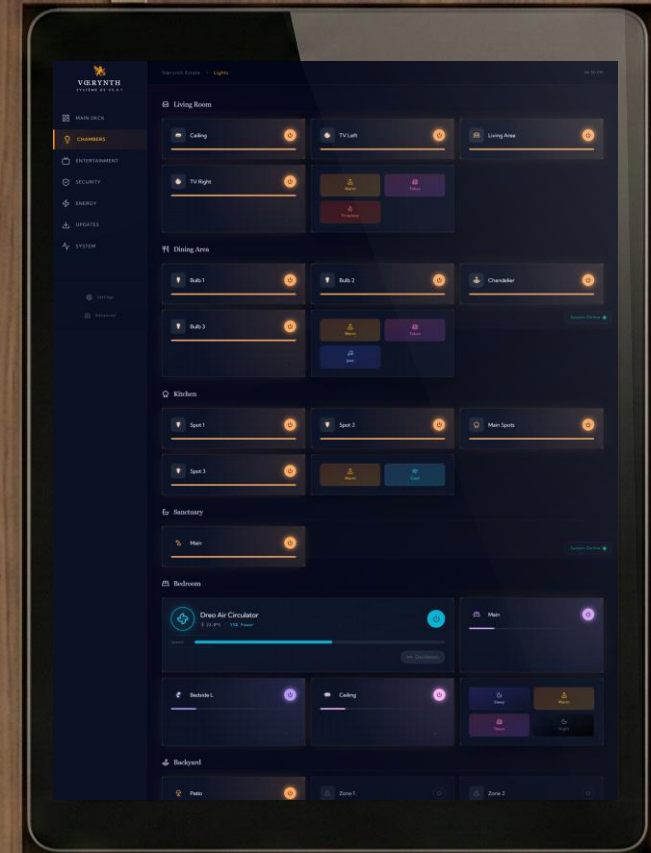


Voerynth OS

5.0.1 — Neural Interface

Room control, unified.

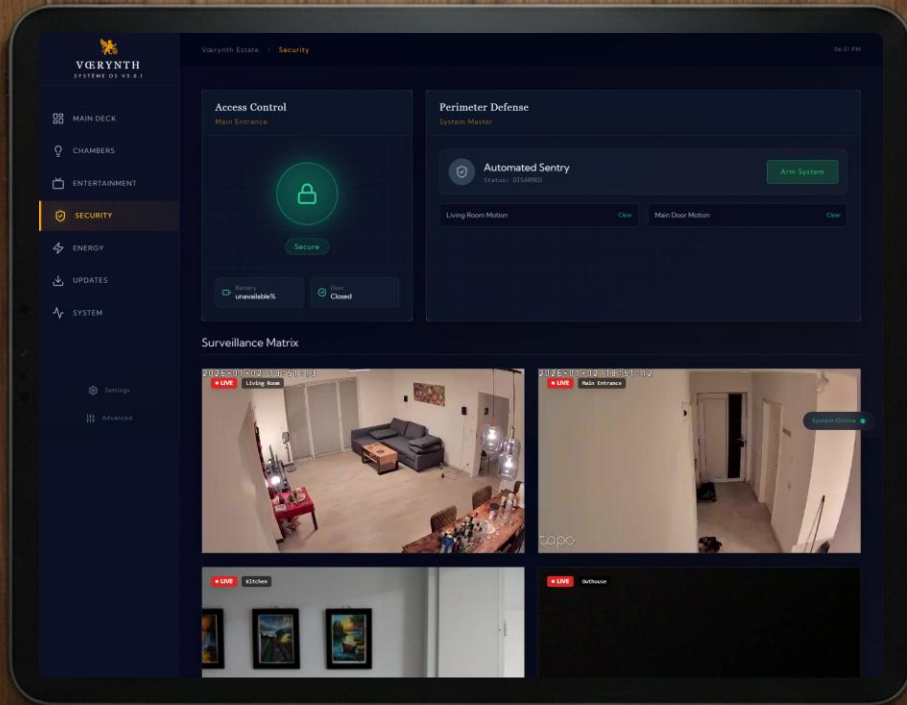
Chambers puts lighting, climate, and scenes for every space in one disciplined layout—fast to read, faster to act.





Voerynth OS

5.0.1 — Neural Interface



Quiet vigilance.

Security is a system, not a panic button. Voerynth OS brings cameras, access, and perimeter signals into a single, disciplined view—so owners and staff can understand what’s happening in seconds and act without guesswork. Live feeds are prioritized by relevance, critical events surface immediately, and daily “all clear” stays unobtrusive. When something changes, the system responds with calm precision: lock states, zones, and alerts stay consistent across roles—owner, crew, and engineering—without exposing complexity.

Resilience is the new luxury.

Energy isn't a statistic—it's continuity. Voerynth OS monitors the heartbeat of your estate, keeps critical systems visible, and makes power events boring. When the grid wobbles, your home doesn't.

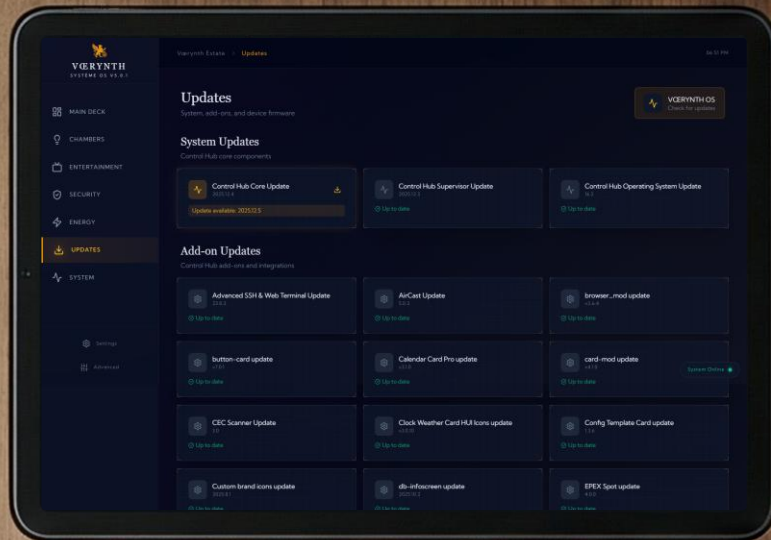
- **Live flow** — grid / solar / battery at a glance
- **Critical-load awareness** — what matters stays protected
- **Efficiency, not obsession** — patterns you can actually act on
- **Outage-ready visibility** — status before panic
- **Battery & backup clarity** — confidence, not alarms





Voerynth OS

5.0.1 — Neural Interface



Secure updates. Zero leakage.

Voerynth OS pulls updates **inbound only**—your estate never uploads operational data to any cloud. The updater keeps every node aligned: control hubs, edge devices, and firmware across the network.

Only **Voerynth-tested firmware** is delivered, so reliability stays intact and “random vendor surprises” don’t enter your system.

If Auto-Update is enabled, the **local LLM schedules updates** during the quietest window—when activity is lowest—so comfort and operations remain uninterrupted.

Quiet power, measured.

Voerynth OS keeps the estate's nervous system visible without turning it into a control-room circus. In one glance, owners and engineers can confirm the backbone is healthy — compute headroom, memory margin, and network throughput — so performance stays predictable when the house is busy, and reliability isn't based on hope.

The result: fewer mysteries, faster diagnosis, and a system that stays composed even under load.





Vøerynth OS

5.0.1 — Neural Interface



Keyed to your estate.

Vøerynth OS isn't an app you "set up." It's a system that's commissioned.

Each client receives a dedicated Control Core installed on-site — the local brain that speaks to lighting, climate, security, energy, and sensors over the property's own network. The interface stays elegant; the complexity stays behind the curtain.

And it's intentionally non-portable. Your deployment is keyed to its hardware and signed components, so it can't be cloned, exported, or casually replicated. Updates are pulled down only (never uploaded), delivered as verified packages, and deployed in the least disruptive window — automatically, if you allow it.

In short: the system runs like a discreet staff member — present, reliable, and never gossiping outside the house.

Luxury, made dependable.

No cloud dependency. No app-hunting. No chaos. Vøerynth OS is a private, hardware-locked command layer commissioned for your environment—built to run quietly for years.

- **Private.** Local-first, designed to keep sensitive control on the property
- **Reliable.** Structured automation, predictable behaviour, audited updates
- **Elegant.** Scenes over micromanagement—calm experiences, not dashboards

Commission Vøerynth for your property.

Contact:

- **Phone / WhatsApp:** +49 15906 709 583
- **Email:** contact@voerynth.de
- **Website:** voerynth.de

